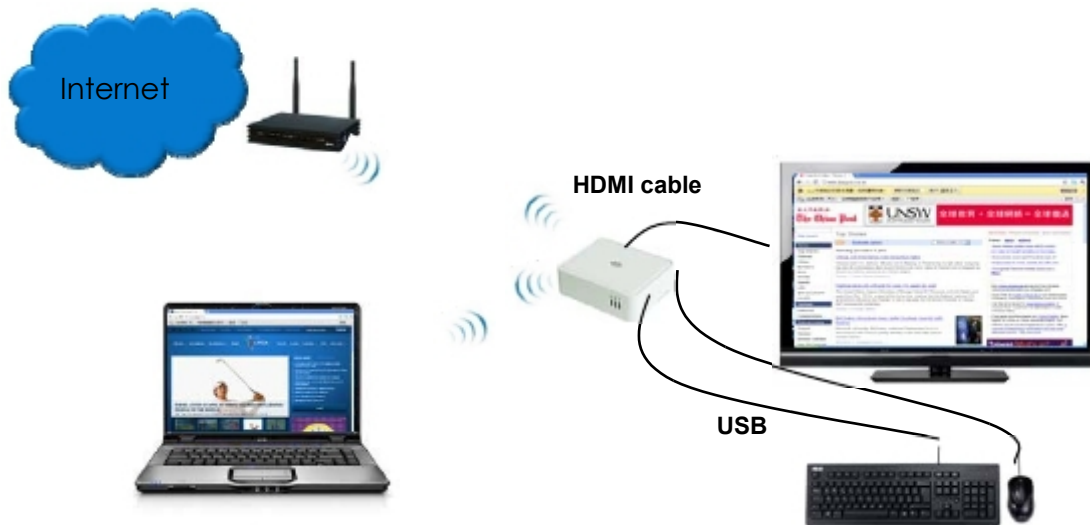


## 1. Overview

MP-680-M01 is a breakthrough product that allows two people share the same computer resource but do different works. It needs no extra USB hubs and video cards, and it can communicate with first user wirelessly. It's equipped with one HDMI and three USB interfaces for user to use as a stand-alone computer.



## 2. Key Feature

- Wireless transmission.
- With HDMI to connect HDMI display, e.g. TV and monitor
- With USB to connect your keyboard, mouse and flash drive.
- Economically allow two people do different work on the same computer.
- People can share the same resources without interruptions.
- No need to buy another computer.
- People can manage their private folders and files.
- Energy savings and reduce the carbon footprint

### 3. Product Specifications

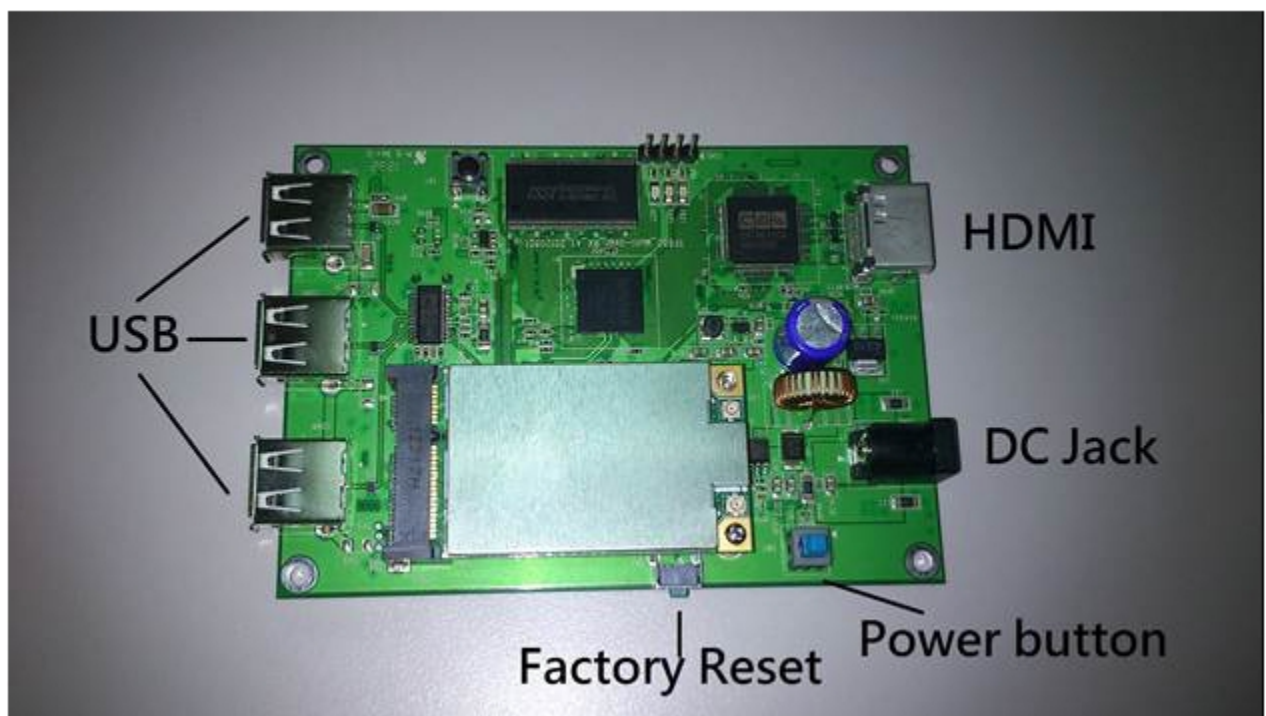
<i>Hardware</i>	
Board Dimension (cm)	10.5(L) X 7.5(W) X 1.5(H)
Standard	IEEE 802.11 a/b/g/n
Interface	HDMI output x 1 USB x 3 DC Jack x 1
Transmit distance	Indoors: up to 10~ 25 meters
LED indicators	LED *2 (power / WiFi) 1. Power on (Red) 2. WiFi on (green) / WiFi in traffic (green blinking)
Operating Temperature	0°C~40°C
Storage temperature	-25°C~70°C
Compliance	CE,FCC,RoHS

※ We will suggest you use the power supply input AC 100V~230V and output DC 5V 3A for the module.

<i>Software</i>	
Audio format	LPCM
Language Support	English
High security with	WEP 64/128, TKIP, WPA, WPA2, AES mixed, 802.1x and 802.11i

build-in	HDCP		
<i>Display Resolution Support</i>			
Acronym	Aspect ratio	Width (px)	Height (px)
VGA	4:3	640	480
SVGA	4:3	800	600
XGA	4:3	1024	768
XGA+	4:3	1152	864
WXGA	16:9	1280	720
WXGA	5:3	1280	768
WXGA	16:10	1280	800
SXGA- (UVGA)	4:3	1280	960
SXGA	5:4	1280	1024
HD	~16:9	1360	768
WXGA+	16:10	1440	900
HD+	16:9	1600	900
WSXGA+	16:10	1680	1050
FHD	16:9	1920	1080

#### 4. Module Image



# 5. Mechanical Drawing

